

## 801 F Avenue

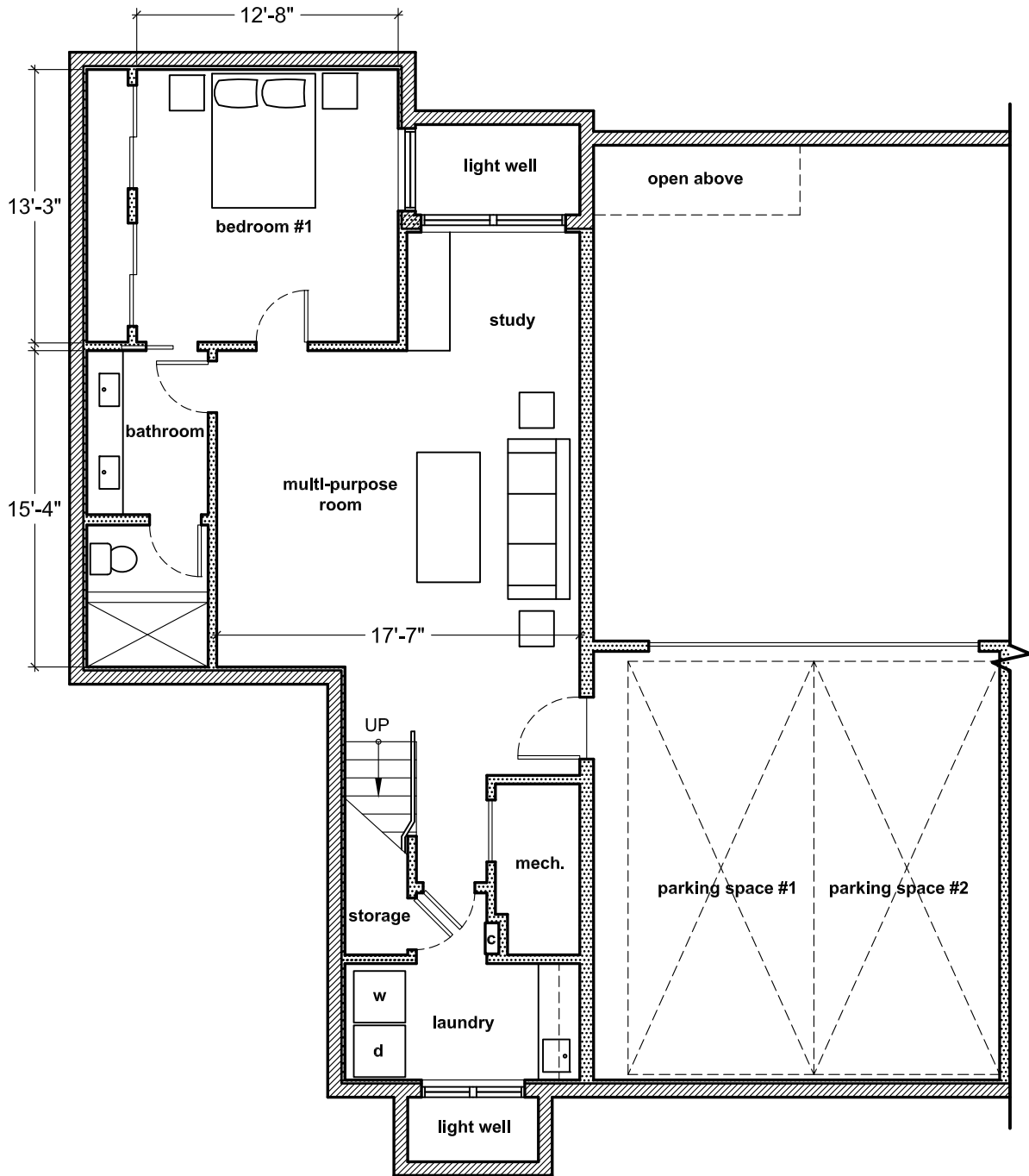
### Area Calculations:

---

Basement: 943 (does not include parking garage)  
First: 918  
Second: 807  
TOTAL: 2,668 sq.ft. (does not include 350 sq.ft. roof deck)

801 f avenue  
coronado, ca 92118

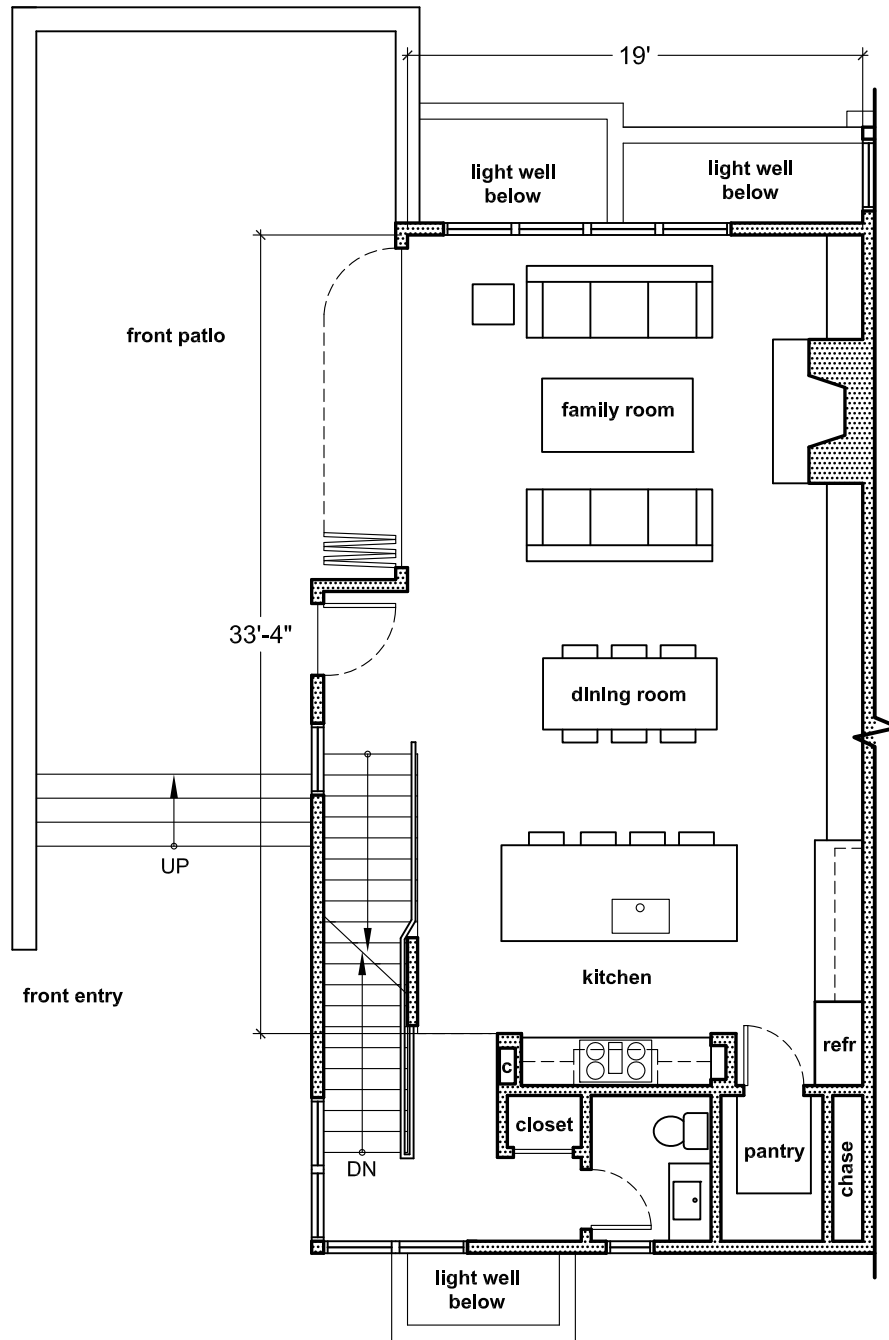
project architect:  
christian rice architects, inc.



basement level floor plan

801 f avenue  
 coronado, ca 92118

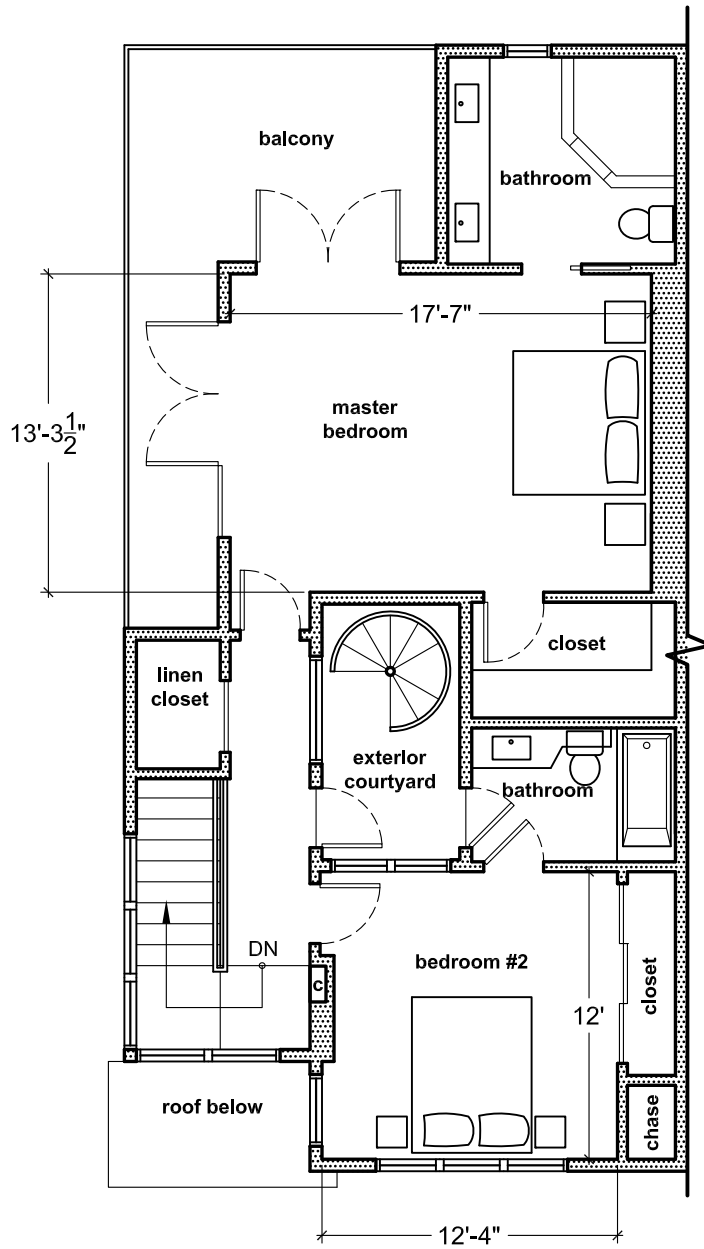
project architect:  
 christian rice architects, inc.



first level floor plan

801 f avenue  
 coronado, ca 92118

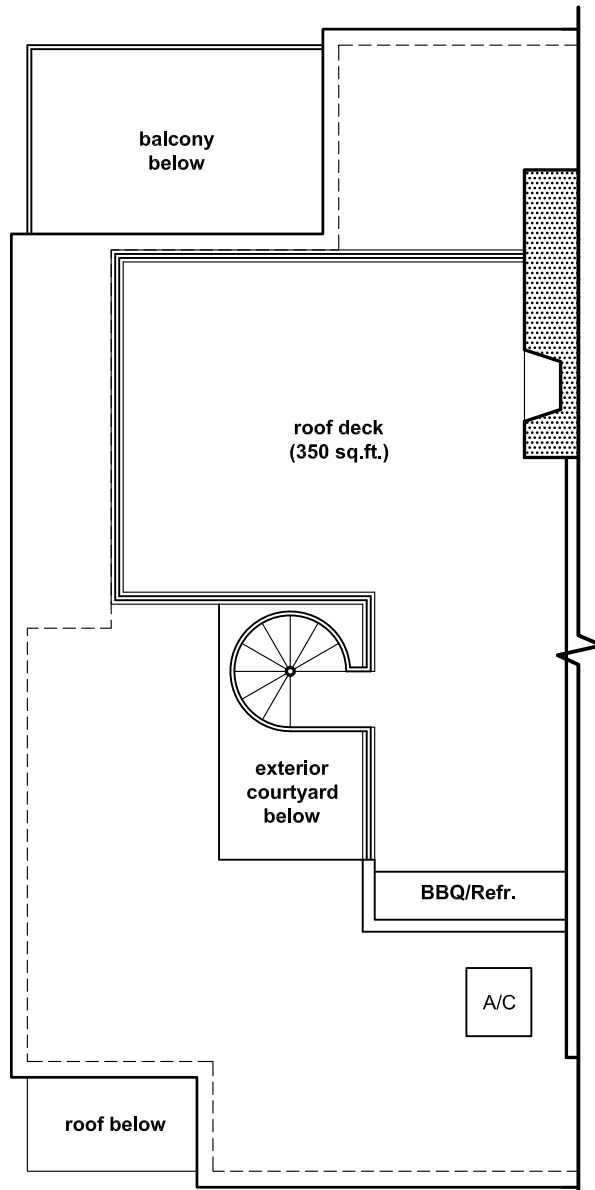
project architect:  
 christian rice architects, inc.



second level floor plan

801 f avenue  
 coronado, ca 92118

project architect:  
 christian rice architects, inc.



## roof plan

801 f avenue  
coronado, ca 92118

project architect:  
christian rice architects, inc.